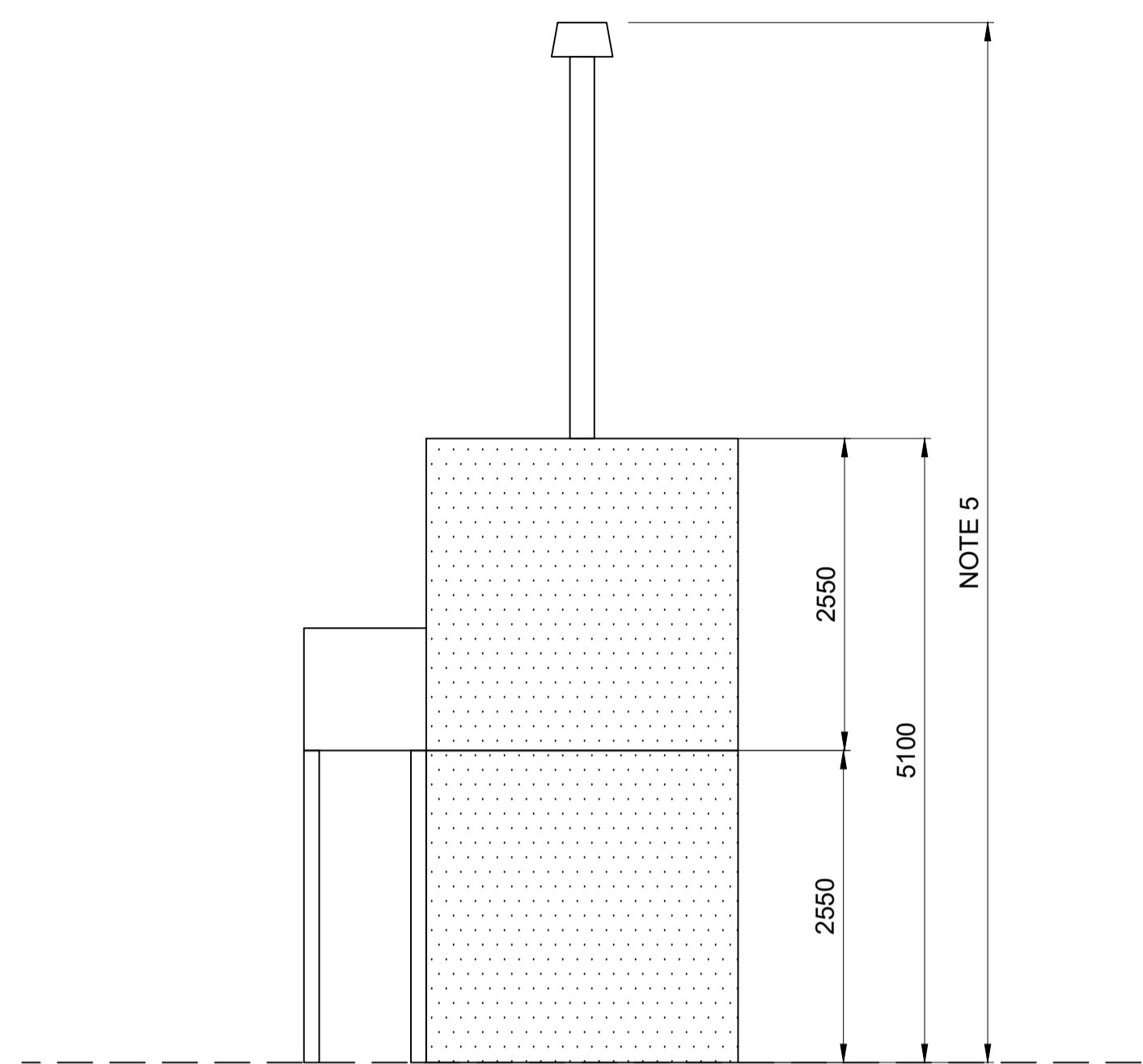
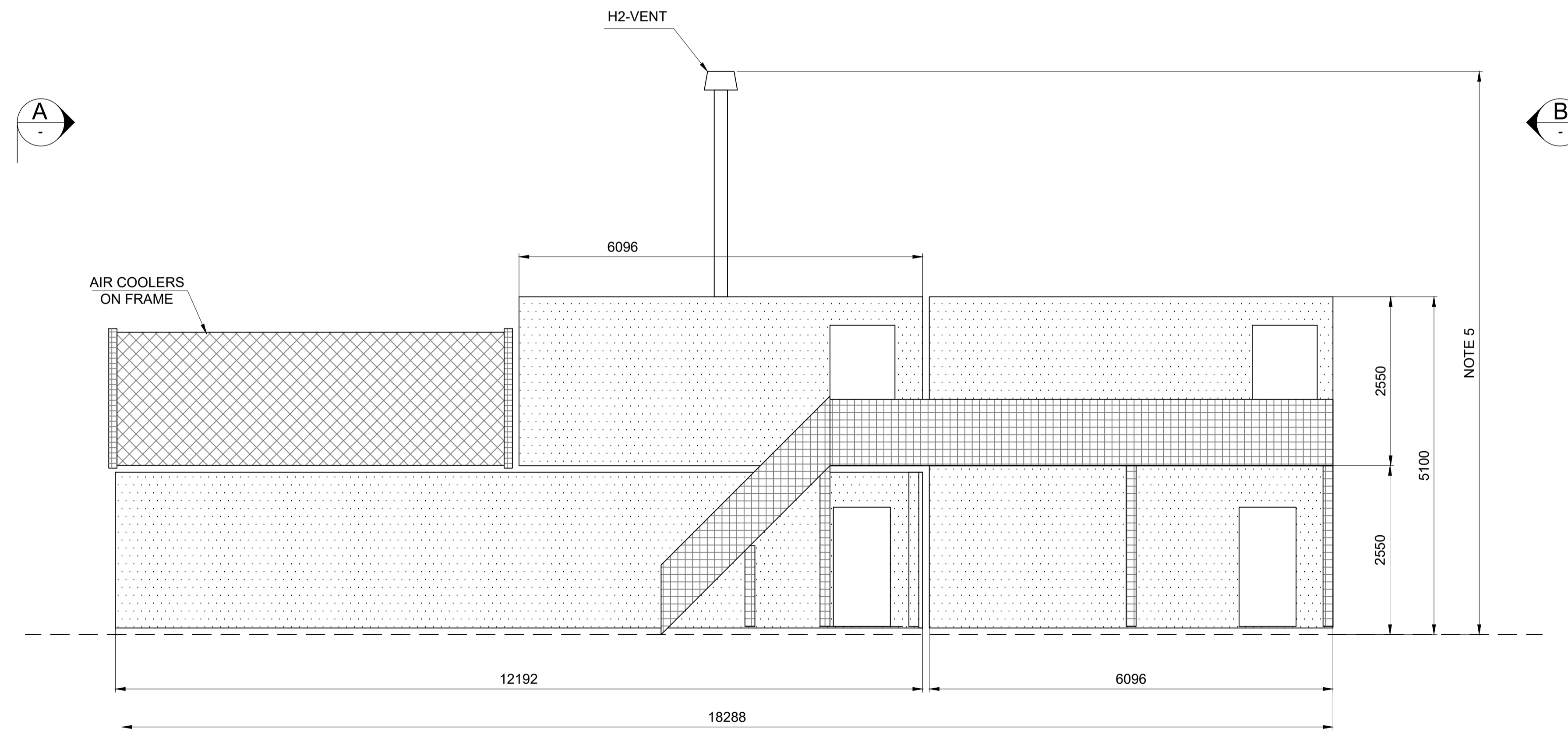


TYPICAL END ELEVATION OF ELECTROLYSER /
BOP CONTAINERS (A-A)



TYPICAL END ELEVATION OF ELECTROLYSER /
BOP CONTAINERS (B-B)



TYPICAL SIDE ELEVATION OF ELECTROLYSER /
BOP CONTAINERS

- Notes
- DO NOT SCALE FROM THIS DRAWING.
 - ALL DIMENSIONS ARE IN MM UNLESS OTHERWISE STATED.
 - THIS DRAWING IS TO BE READ IN CONJUNCTION WITH ALL RELEVANT DOCUMENTS AND DRAWINGS.
 - STORAGE VESSEL DIMENSIONS & SUPPORT STRUCTURE ARE INDICATIVE.
 - H2 VENT HEIGHT TO BE LESS THAN 10 METERS.

- Holds
- EQUIPMENT / CONTAINER CONFIGURATION DETAILS - VENDOR TO CONFIRM.

Reference drawings

Rev	Date	Drawn	Description	Ch'k'd	App'd
P01	11/11/22	KC	ISSUED FOR INFORMATION	AHo	JP

Status Stamp
NOT FOR CONSTRUCTION

<p>MOTT MACDONALD</p>	<p>Victory House Trafalgar Place Brighton, BN1 4FY United Kingdom</p>
	<p>T +44 (0)1273 365000 F +44 (0)20 8681 5706 W www.mottmac.com</p>

Client	<p>Marubeni</p> <p>95 Gresham Street London EC2V 7AB +44 (0)20 7826 8811 www.marubeni-europower.com</p>
--------	--

Title
**BRIDGEND GREEN HYDROGEN
HYDROGEN PRODUCTION FACILITY
ELECTROLYSER ELEVATIONS**

Sheet 01 of 01

Designed	A. Harris	AH	Eng check	AHo	AHo
Drawn	K. Chaudhari	KC	Coordination	A. Harris	AH
Dwg check	M. Panchal	MP	Approved	J. Paul	JP

MMD Project Number	Scale at A1	Security
108939	1:50	STD
Suitability Description	Suit. Code	
Suitable for Review & Comment	S3	
Drawing Number	Revision	
108939-MMD-BRGR-XX-DR-C-0058	P01	

